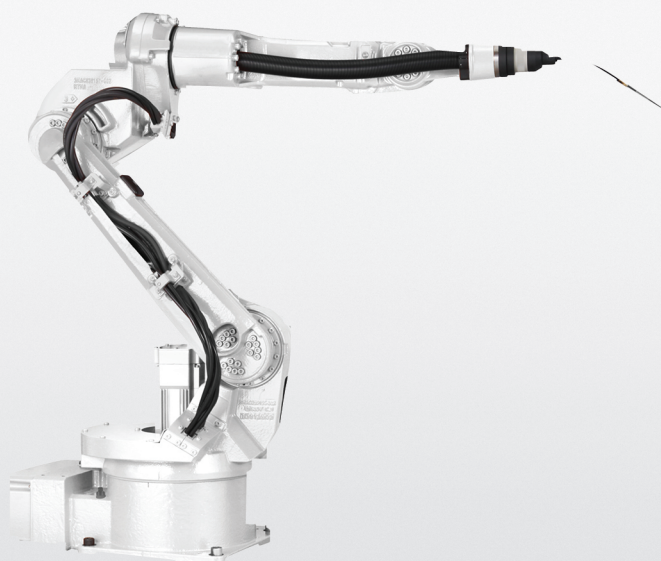


ROBOTICS

Product manual, spare parts

IRB 1520



Trace back information:
Workspace 24B version a5
Checked in 2024-06-05
Skribenta version 5.5.019

Product manual, spare parts

IRB 1520ID - 4/1.5

IRC5, OmniCore

Document ID: 3HAC043436-001

Revision: J

The information in this manual is subject to change without notice and should not be construed as a commitment by ABB. ABB assumes no responsibility for any errors that may appear in this manual.

Except as may be expressly stated anywhere in this manual, nothing herein shall be construed as any kind of guarantee or warranty by ABB for losses, damage to persons or property, fitness for a specific purpose or the like.

In no event shall ABB be liable for incidental or consequential damages arising from use of this manual and products described herein.

This manual and parts thereof must not be reproduced or copied without ABB's written permission.

Keep for future reference.

Additional copies of this manual may be obtained from ABB.

Original instructions.

© Copyright 2012-2024 ABB. All rights reserved.
Specifications subject to change without notice.

Table of contents

Overview of this manual	7
Product documentation	9
1 Spare part lists and illustrations	11
1.1 Spare parts - complete robot	11
1.2 Spare parts - motors	12
1.3 Spare parts - gearboxes	15
1.4 Spare parts - lower arm	17
1.5 Spare parts - upper arm and wrist	18
1.6 Spare parts - base and frame	21
1.7 Spare parts - cable harness, brake release and SMB	23
1.8 Spare parts - options	25

This page is intentionally left blank

Overview of this manual

About this manual

This manual contains spare parts for:

- IRB 1520ID

Usage

This manual shall be used as a complement to the product manual for IRB 1520 during:

- maintenance work
- repair work.

Who should read this manual?

This manual is intended for:

- maintenance personnel
- repair personnel.

Prerequisites

Maintenance/repair/installation personnel working with an ABB Robot must:

- be trained by ABB and have the required knowledge of mechanical and electrical installation/repair/maintenance work.

References

Reference	Document ID
<i>Product manual - IRB 1520</i>	<i>3HAC043435-001</i>
<i>Circuit diagram - IRB 1520</i>	<i>3HAC039498-007</i>

Revisions

Revision	Description
-	First edition
A	This edition contains the following changes: <ul style="list-style-type: none"> • A new SMB unit and battery is introduced, with longer battery lifetime.
B	This edition contains the following changes: <ul style="list-style-type: none"> • Spare parts with color Graphite White are added to the spare part lists.
C	New spare part numbers added for axis-1, axis-2, and axis-3 motors, and also for connection boxes.
D	Corrected spare part Plate for axis to Protection screw.
E	Published in release R17.2. The following updates are made in this revision: <ul style="list-style-type: none"> • Added spare part Signal cable SMB and spare parts of options.
F	Published in release R18.1. The following updates are done in this revision: <ul style="list-style-type: none"> • Updated spare parts number brake release board/push button (was DSQC563, is DSQC1050)
G	Published in release R18.2. The following updates are done in this revision: <ul style="list-style-type: none"> • Updated spare parts number brake release board/push button from 3HAC065022-001 to 3HAC064944-001.

Continues on next page

Overview of this manual

Continued

Revision	Description
H	Published in release 21D. The following updates are done in this revision: <ul style="list-style-type: none">• Screw added to spare parts list, see Spare parts - upper arm and wrist on page 18.
J	Published in release 24B. The following updates are done in this revision: <ul style="list-style-type: none">• Added support for OmniCore controller.

Product documentation

Categories for user documentation from ABB Robotics

The user documentation from ABB Robotics is divided into a number of categories. This listing is based on the type of information in the documents, regardless of whether the products are standard or optional.



Tip

All documents can be found via myABB Business Portal, www.abb.com/myABB.

Product manuals

Manipulators, controllers, DressPack, and most other hardware is delivered with a **Product manual** that generally contains:

- Safety information.
- Installation and commissioning (descriptions of mechanical installation or electrical connections).
- Maintenance (descriptions of all required preventive maintenance procedures including intervals and expected life time of parts).
- Repair (descriptions of all recommended repair procedures including spare parts).
- Calibration.
- Troubleshooting.
- Decommissioning.
- Reference information (safety standards, unit conversions, screw joints, lists of tools).
- Spare parts list with corresponding figures (or references to separate spare parts lists).
- References to circuit diagrams.

Technical reference manuals

The technical reference manuals describe reference information for robotics products, for example lubrication, the RAPID language, and system parameters.

Application manuals

Specific applications (for example software or hardware options) are described in **Application manuals**. An application manual can describe one or several applications.

An application manual generally contains information about:

- The purpose of the application (what it does and when it is useful).
- What is included (for example cables, I/O boards, RAPID instructions, system parameters, software).
- How to install included or required hardware.
- How to use the application.

Continues on next page

- Examples of how to use the application.

Operating manuals

The operating manuals describe hands-on handling of the products. The manuals are aimed at those having first-hand operational contact with the product, that is production cell operators, programmers, and troubleshooters.

1 Spare part lists and illustrations

1.1 Spare parts - complete robot

Spare part list

Pos.	Description	Spare part no.	Qty
A	Labels and plate set	3HAC039497-001	1 pc

1 Spare part lists and illustrations

1.2 Spare parts - motors

1.2 Spare parts - motors

Spare part list

All the spare part numbers for the motors include both the pinion and required o-ring. The o-ring can also be ordered separately and is listed directly under the motor spare part.



Note

Motors and connection boxes for Type B are not compatible with other types and can therefore only be used to replace other motors and connection boxes of Type B.

Pos.	Description	Spare part no.	Color	Qty
A	Motor, axis 1	3HAC041529-001 (for other than Type B)	ABB Orange	1 pc
		3HAC054857-001 (for Type B)		
	Motor, axis 1	3HAC050430-001 (for other than Type B)	Graphite White	1 pc
		3HAC054858-001 (for Type B)		
B	O-ring, axis 1 motor	3HAB3772-102	-	1 pc
C	Connection box	3HAC041528-001 (for other than Type B)	ABB Orange	2 pcs
		3HAC056381-001 (for Type B)		
	Connection box	3HAC050431-001 (for other than Type B)	Graphite White	2 pcs
		3HAC056382-001 (for Type B)		
D	Motor cover	3HAC041565-001	ABB Orange	2 pcs
	Motor cover	3HAC050432-001	Graphite White	2 pcs
E	Motor, axis 2	3HAC041531-001 (for other than Type B)	ABB Orange	1 pc
		3HAC054859-001 (for Type B)		
	Motor, axis 2	3HAC050433-001 (for other than Type B)	Graphite White	1 pc
		3HAC054860-001 (for Type B)		
F	O-ring, axis 2 motor	3HAB3772-102	-	1 pc
G	Motor, axis 3	3HAC041749-001 (for other than Type B)	-	1 pc
		3HAC054861-001 (for Type B)		
H	O-ring, axis 3 motor	3HAB3772-112	-	1 pc

Continues on next page

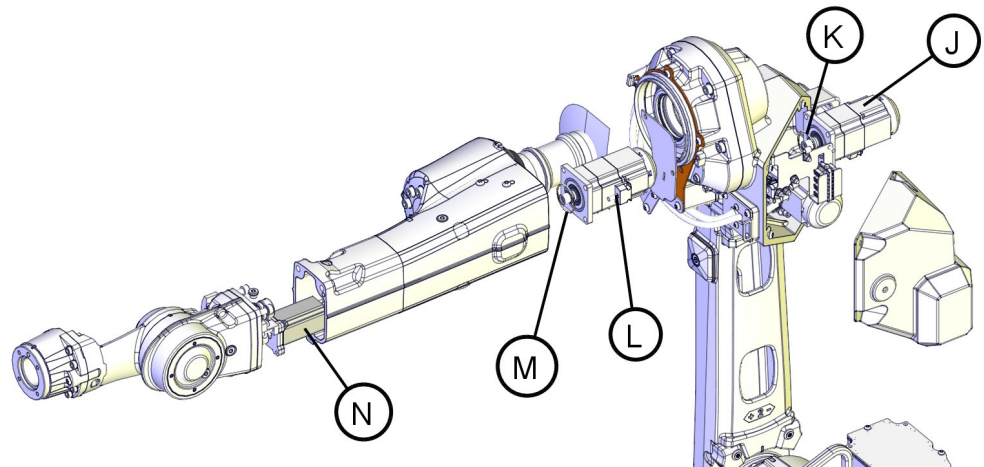
1 Spare part lists and illustrations

1.2 Spare parts - motors

Continued

Pos.	Description	Spare part no.	Color	Qty
J	Motor, axis 4	3HAC021799-003	-	1 pc
K	O-ring, axis 4 motor	3HAB3772-81	-	1 pc
L	Motor, axis 5	3HAC021799-003	-	1 pc
M	O-ring, axis 5 motor	3HAB3772-81	-	1 pc
N	Motor, axis 6	3HAC17342-1	-	1 pc

Spare part - illustrations



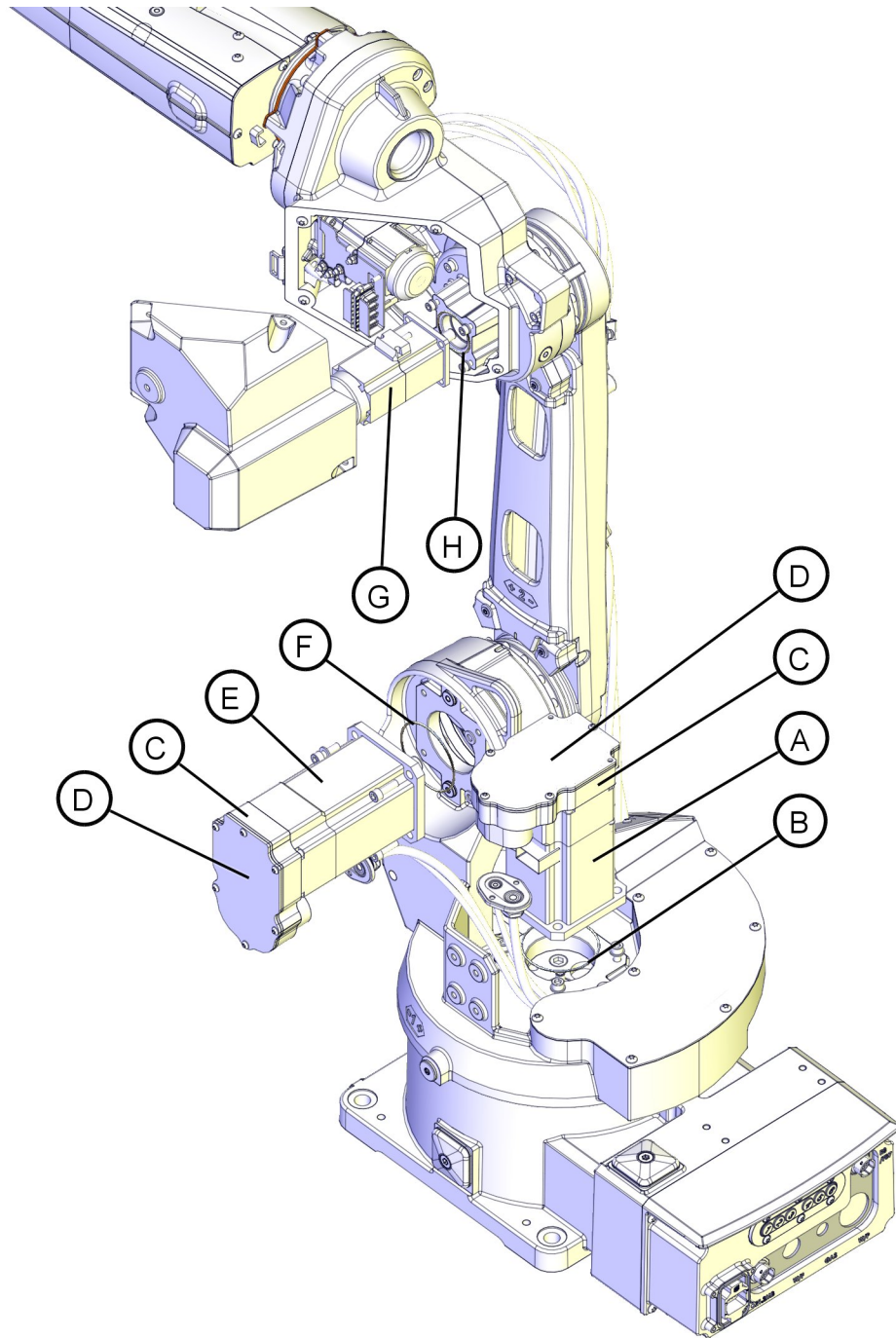
xx110000501

Continues on next page

1 Spare part lists and illustrations

1.2 Spare parts - motors

Continued



xx110000493

1.3 Spare parts - gearboxes

Spare part list

Pos.	Description	Spare part no.	Color	Qty
A	Gearbox, axis 1	3HAC037835-001	-	1 pc
B	O-ring, axis 1 gearbox	3HAB3772-65	-	1 pc
C	O-ring, axis 1 gearbox	21520431-20	-	6 pcs
D	Gearbox, axis 2	3HAC041572-001	ABB Orange	1 pc
	Gearbox, axis 2	3HAC050429-001	Graphite White	1 pc
E	Gearbox, axis 3	3HAC041572-001	ABB Orange	1 pc
	Gearbox, axis 3	3HAC050429-001	Graphite White	1 pc

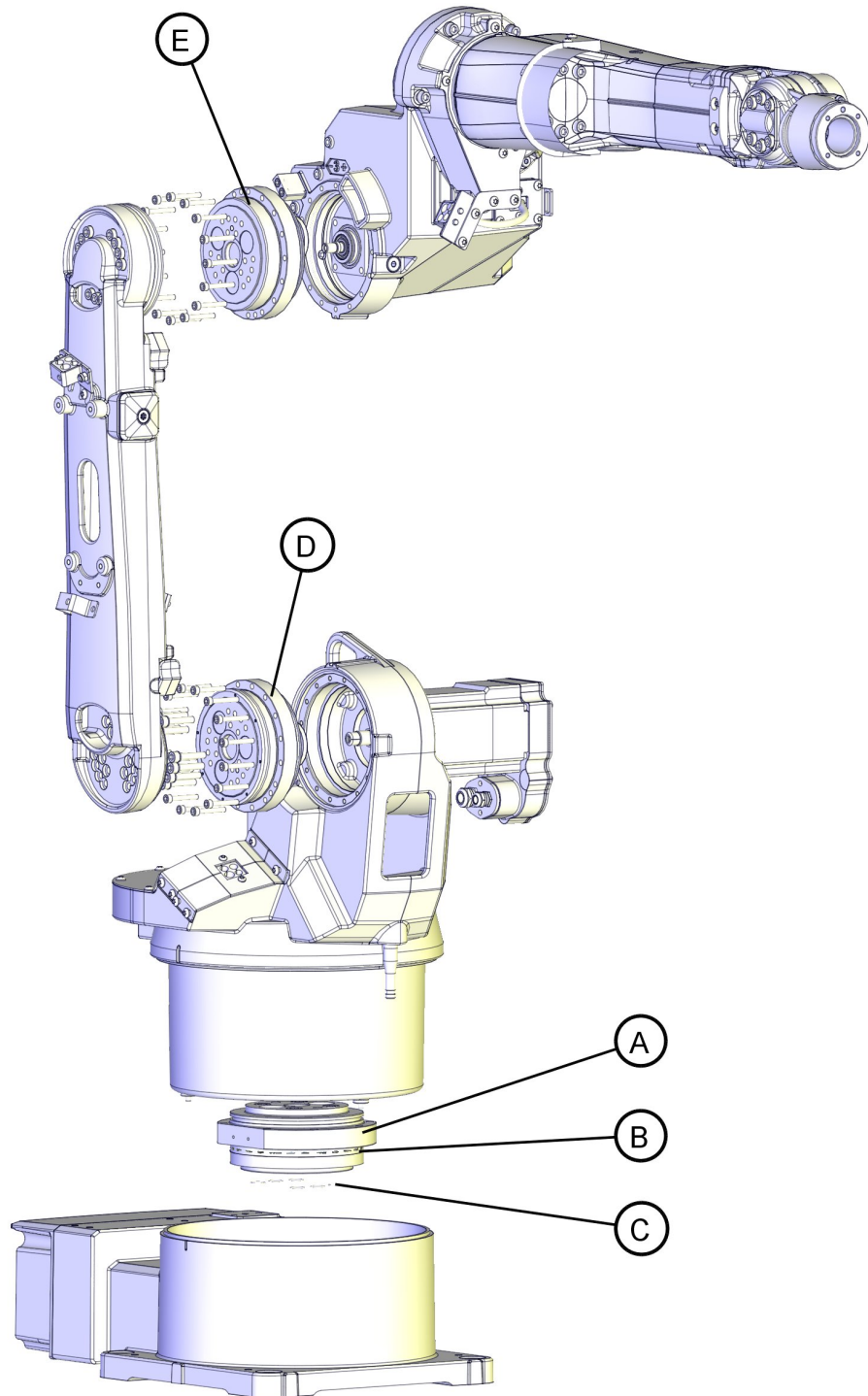
Continues on next page

1 Spare part lists and illustrations

1.3 Spare parts - gearboxes

Continued

Spare part - illustration



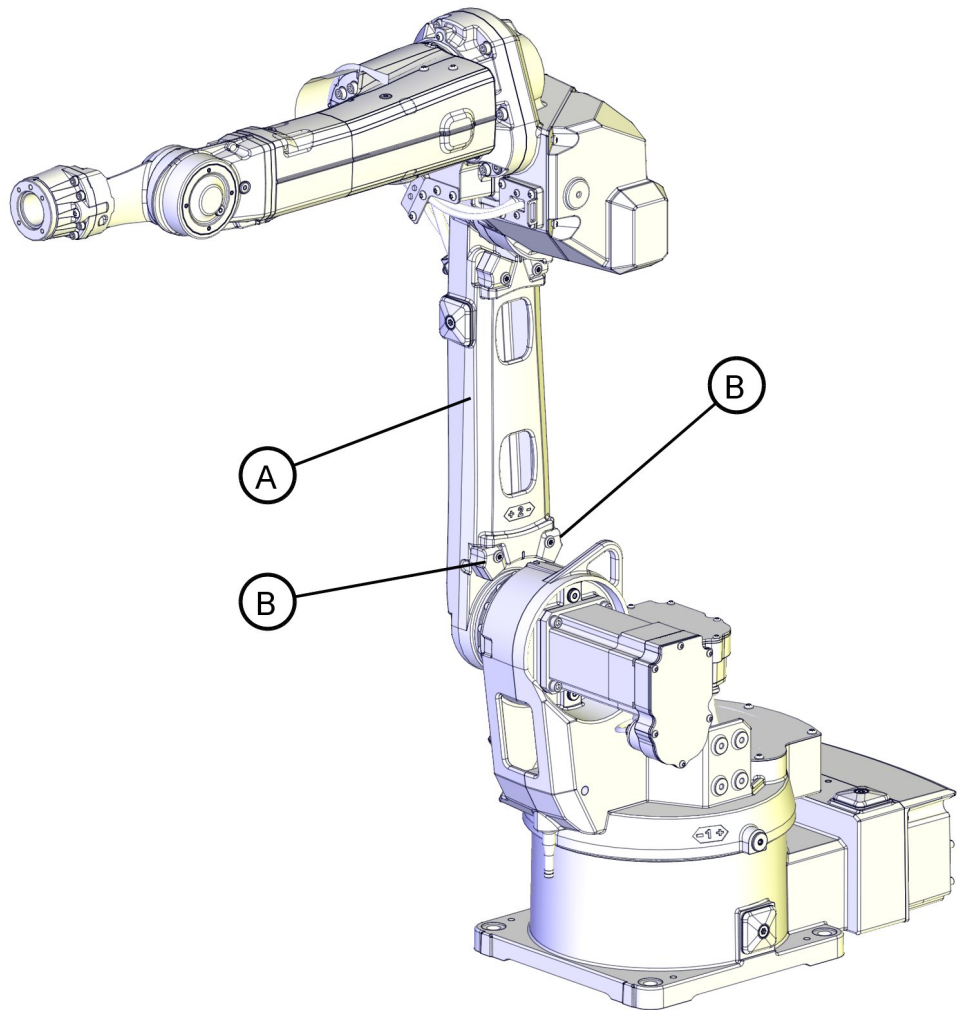
xx110000502

1.4 Spare parts - lower arm

Spare part list

Pos.	Description	Spare part no.	Color	Qty
A	Lower arm	3HAC041532-001	ABB Orange	1 pc
	Lower arm	3HAC050427-001	Graphite White	1 pc
B	Damper, axis 2	3HAC041533-001	-	2 pcs

Spare part - illustration



xx110000503

1 Spare part lists and illustrations

1.5 Spare parts - upper arm and wrist

1.5 Spare parts - upper arm and wrist

Spare part list

Pos.	Description	Spare part no.	Color	Qty
A	Upper arm	3HAC041534-001	ABB Orange	1 pc
	Upper arm	3HAC050426-001	Graphite White	1 pc
B	Wrist	3HAC027716-001	ABB Orange	1 pc
	Wrist	3HAC050411-001	Graphite White	1 pc
C	Cable harness	3HAC027523-001	-	1 pc
D	Armhouse cover	3HAC041767-001	ABB Orange	1 pc
	Armhouse cover	3HAC050425-001	Graphite White	1 pc
E	Mechanical stop, axis 3	3HAC041768-001	-	1 pc
F	Cover, upper arm tube	3HAC027877-001	ABB Orange	1 pc
	Cover, upper arm tube	3HAC050413-001	Graphite White	1 pc
G	Bracket	3HAC040074-001	-	1 pc
H	V-ring, axis 4	3HAB3732-25	-	1 pc
I	Torx pan head screw	3HAC080811-001	-	4 pcs

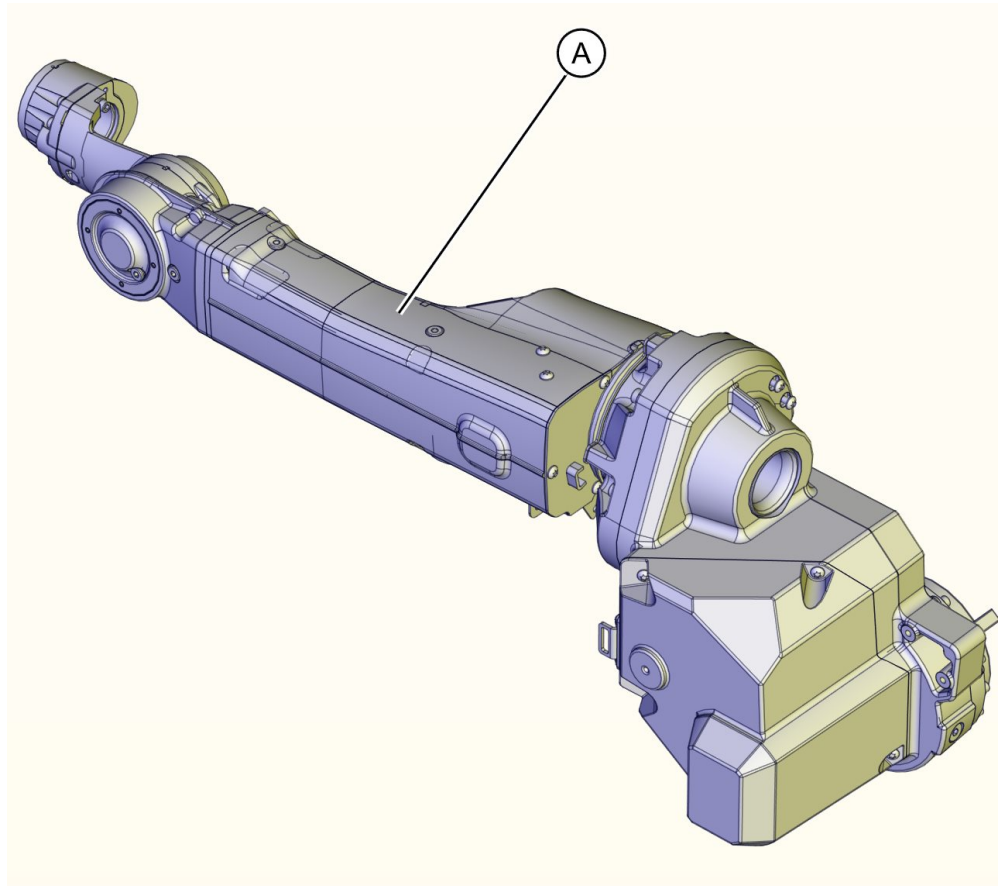
Continues on next page

1 Spare part lists and illustrations

1.5 Spare parts - upper arm and wrist

Continued

Spare part - illustration



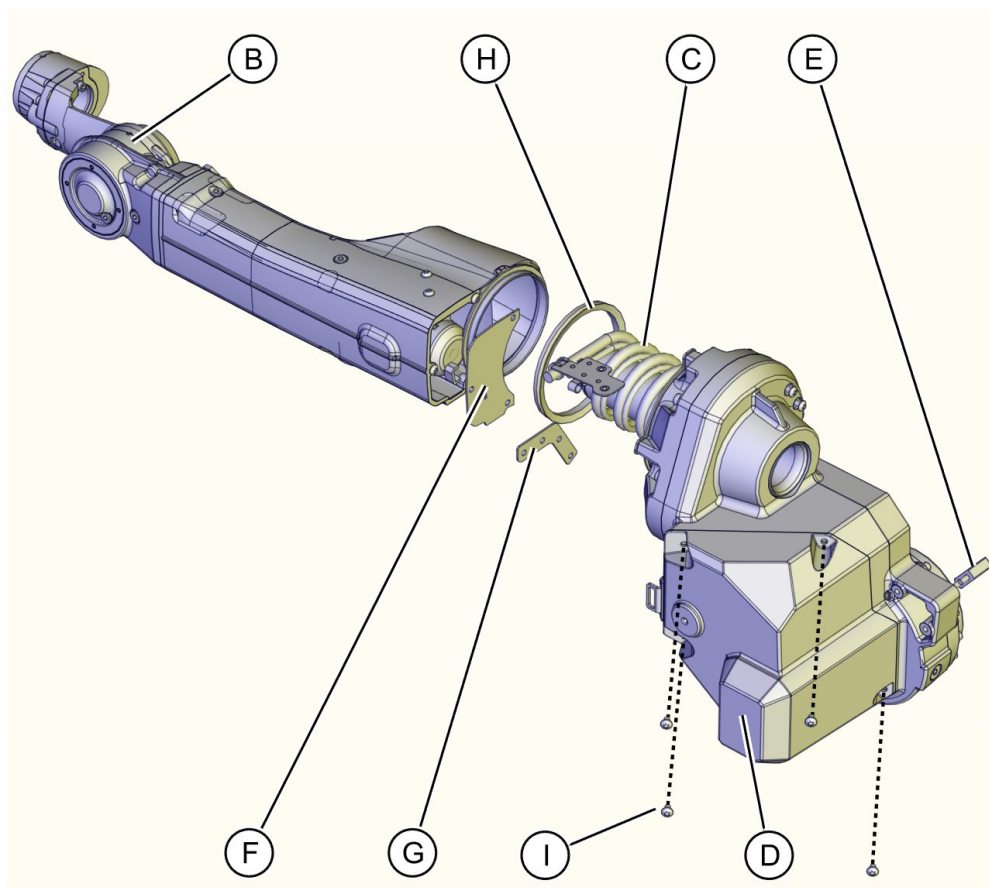
xx110000528

Continues on next page

1 Spare part lists and illustrations

1.5 Spare parts - upper arm and wrist

Continued



xx110000505

1.6 Spare parts - base and frame

Spare part list

Pos.	Description	Spare part no.	Color	Qty
A	Oil draining tube	3HAC041258-001	-	1 pc
B	Plate for connector	3HAC039881-001	-	1 pc
C	Cover, frame	3HAC041520-001	ABB Orange	1 pc
	Cover, frame	3HAC050424-001	Graphite White	1 pc
D	Base	3HAC041525-001	ABB Orange	1 pc
	Base	3HAC050420-001	Graphite White	1 pc
E	Frame	3HAC041526-001	ABB Orange	1 pc
	Frame	3HAC050423-001	Graphite White	1 pc
F	Cover	3HAC041746-001	ABB Orange	1 pc
	Cover	3HAC050421-001	Graphite White	1 pc
G	Cover	3HAC041747-001	ABB Orange	1 pc
	Cover	3HAC050422-001	Graphite White	1 pc
H	Base cover, including gas- ket (3HAC039951-001)	3HAC041523-001	ABB Orange	1 pc
	Base cover, including gas- ket (3HAC039951-001)	3HAC050419-001	Graphite White	1 pc
J	Cable protection, frame	3HAC039159-001	-	1 pc
K	Cable protection, base	3HAC039158-001	-	1 pc
L	Mechanical stop, axis 1	3HAC041530-001	-	1 pc

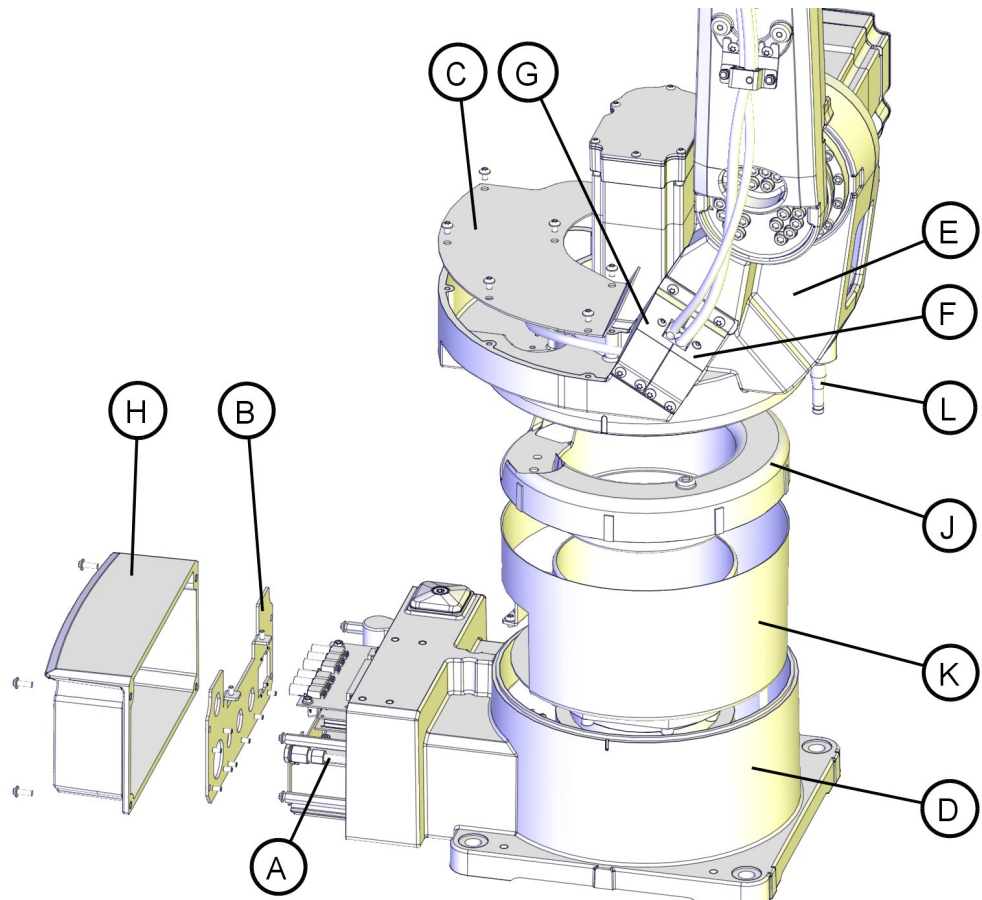
Continues on next page

1 Spare part lists and illustrations

1.6 Spare parts - base and frame

Continued

Spare part - illustration



xx110000510

1.7 Spare parts - cable harness, brake release and SMB

Spare part list

Pos.	Description	Spare part no.	Note
-	Cable harness, standard ⁱ	3HAC039515-001	
-	Cable harness, AW	3HAC039514-001	
B	Battery pack (3-pole battery contact)	3HAC044075-001	RMU Lithium Can only be used with SMB board 3HAC044168-001
B	Battery pack (2-pole battery contact)	3HAC16831-1	Lithium Can only be used with SMB board 3HAC031851-001
C	Serial measurement board	3HAC044168-001	RMU 101
C	Serial measurement board	3HAC031851-001	DSQC633A
D	Brake release board/Push button unit	3HAC064944-001	DSQC1054
E	Protection screw	3HAC14024-1	
F	Signal cable SMB	3HAC4050-1	

ⁱ Cable harness, standard 3HAC039515-001 delivered might be different from the one used in your robot. The difference is the availability of a pin in pin hole 18 on the power connector.
The cable harness with a pin in pin hole 18 on the power connector can only be used for connecting with IRC5 controller; the one without a pin in pin hole 18 can be used for both IRC5 and OmniCore controller.

Continues on next page

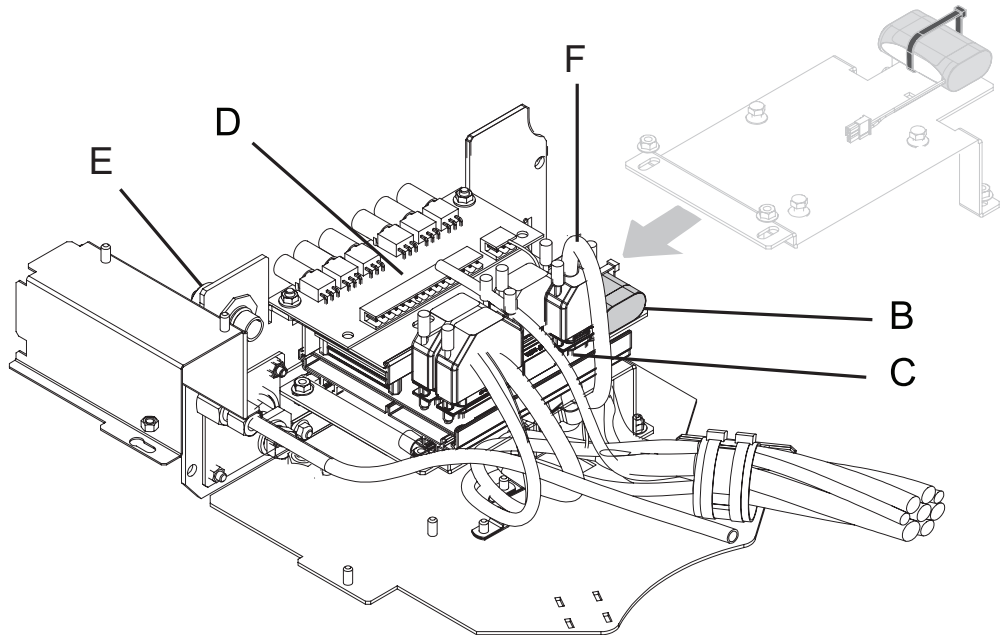
1 Spare part lists and illustrations

1.7 Spare parts - cable harness, brake release and SMB

Continued

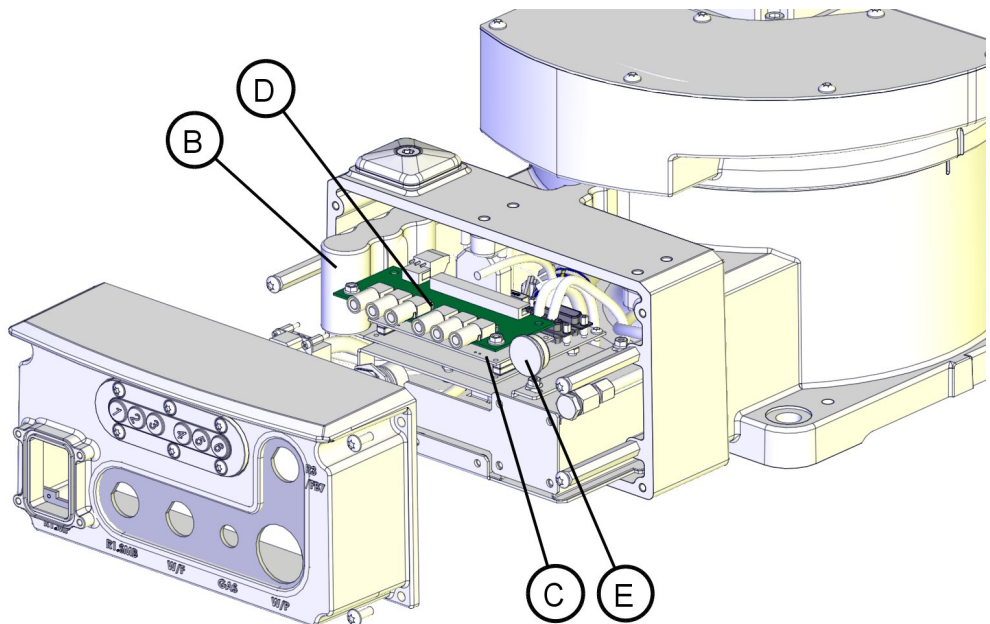
Spare part - illustration

RMU 101



xx130000330

DSQC633A



xx110000512

1.8 Spare parts - options

Spare part list

Pos.	Description	Spare part no.	Note
-	Cable FB7-SMB 1.7	3HAC15619-1	Option 864-1 On base
-	Welding base cable harness	3HAC039521-001	Option 1029-15 RPC S-400 or option 1029-17 Process cabling
-	Welding lower arm cable, 1.9 m	3HAC039047-001	Option 1029-15 RPC S-400 and option 435-110 IRB 1520ID-4/1.5
-	Welding signal floor cable, 3 m	3HAC039523-001	Option 1029-15 RPC S-400 or option 1029-17 Process cabling
-	Communication card, DeviceNet	3HAC039031-001	Option 1029-15 RPC S-400 or option 1029-16 RPC P-350
-	Cable DeviceNet	3HAC039150-001	Option 1029-15 RPC S-400 or option 1029-16 RPC P-350



ABB AB

Robotics & Discrete Automation

S-721 68 VÄSTERÅS, Sweden

Telephone +46 10-732 50 00

ABB AS

Robotics & Discrete Automation

Nordlysvegen 7, N-4340 BRYNE, Norway

Box 265, N-4349 BRYNE, Norway

Telephone: +47 22 87 2000

ABB Engineering (Shanghai) Ltd.

Robotics & Discrete Automation

No. 4528 Kangxin Highway

PuDong New District

SHANGHAI 201319, China

Telephone: +86 21 6105 6666

ABB Inc.

Robotics & Discrete Automation

1250 Brown Road

Auburn Hills, MI 48326

USA

Telephone: +1 248 391 9000

abb.com/robotics